



Samaritan
COLLEGE

Annual Report 2016

School Context information

Samaritan College is an innovative initiative in the provision of Catholic education in Whyalla. Established in 2008 through the amalgamation of St Teresa's School, Our Lady Help of Christians School and Saint John's College, it offers quality co-educational learning programs for students from Reception to Year 12. Samaritan College welcomes students and families from all religious backgrounds and cultures. It has an Out of School Hours Care facility.

Samaritan College is currently situated on three campuses:

- St Teresa's Campus (R-Year 7) Darling Terrace
- Our Lady Help of Christians Campus (R-Year 7), Toal Street
- Saint John's Campus (Years 8-12) Gowrie Avenue

(note in 2017 the primary campuses became R-6 and secondary 7-12. This report is based on data for 2016)

Local Community Context

Whyalla is a coastal regional city with a population of 22,000. Whyalla has much to offer residents, especially young families, with a relaxed and active lifestyle. It is the gateway to the Eyre Peninsula, Whyalla provides many opportunities to visit beautiful secluded beaches and local friendly townships. Whyalla is within easy access of Adelaide, 45 minutes by plane or a 4 hour drive with beautiful views of Finders Ranges and Spencer Gulf. Whyalla has significant infrastructure with a regional based hospital, a large regional shopping centre, and facilities for a variety of sport and recreational activities. Whyalla also has a campus of UniSA. With the main employers being the services industry, Arrium/Onesteel and allied engineering industries, Whyalla's demographic has mixed employment, diverse cultures, and varied socio economic strata. It can range from highly qualified university graduates working in mining to some areas of high unemployment.

2016 was a year of significant economic change for Whyalla with many families severely impacted by redundancies and job losses related to Arrium's debt issues. The college was simply one of many local organisations impacted by the fall out.

As one of only two non-government schools in Whyalla and the only non-government 8-12 school, Samaritan College offers an R – 12 Catholic co-education for families, with approximately 60% of the enrolments Catholic.

The College's ICSEA value is 1010 (average is 1000)

The College's SES is 92

2016 Enrolment Numbers

Year Level	Male	Female	Total
R	29	31	60
1	27	24	51
2	25	30	55
3	38	37	75
4	34	31	65
5	34	21	55
6	28	31	59
7	37	30	67
8	39	30	69
9	40	39	79
10	38	38	76
11	46	42	88
12	37	46	83
Total	452	430	882

There are 34 Indigenous students enrolled (3.9%)

There are 35 students funded for their disabilities (4.0%)

2016 Staff Numbers

	Teaching	Non	Total
		Teaching	
FTE			
Saint John's	32.5	15.2	47.7
Saint Teresa's	14.9	5.3	20.2
OLHC	17.8	7.8	25.6
	65.2	28.3	93.5

Headcount			
	Teaching	Non	Total
Saint John's	38	22	60
Saint Teresa's	22	10	32
OLHC	25	16	41
	85	48	133

	M/F by Headcount		Total
	Male	Female	
Saint John's	23	37	60
Saint Teresa's	6	25	31
OLHC	6	36	42
	35	98	133

Samaritan College staff also come from a diverse cultural background including staff from Africa, Asia, Europe and South America. The college also employed an Indigenous Education Worker in 2016.

2016 Teacher qualifications

Advanced Diplomas 2

Associate Diplomas 1

Bachelor Degrees 74

Bachelor with Honours 1

Diplomas 11

Certificate IVs 1

Graduate Certificate 9

Graduate Diploma 10

International Diplomas 1

Masters Degrees 5

PhDs 1

2016 Student Attendance Rates

2016 Attendance Rates				
Year Level	Term 1	Term 2	Term 3	Term 4
Reception	92.80%	89.12%	87.52%	88.93%
Year 1	91.79%	92.00%	91.20%	91.08%
Year 2	93.38%	89.51%	89.91%	90.53%
Year 3	90.72%	90.41%	88.04%	91.78%
Year 4	93.24%	90.92%	89.78%	91.75%
Year 5	91.07%	90.08%	88.87%	90.60%
Year 6	92.78%	92.54%	91.62%	91.11%
Year 7	90.72%	91.95%	86.82%	90.87%
Year 8	93.40%	90.36%	89.22%	91.32%
Year 9	89.73%	87.39%	87.68%	85.73%
Year 10	89.41%	89.32%	90.99%	87.59%
Year 11	93.50%	92.29%	89.79%	92.70%
Year 12	92.88%	87.83%	86.01%	96.30%
Average	91.96%	90.29%	89.03%	90.79%

Student attendance is closely monitored at Samaritan College. The roll is taken each morning in class and late arrivals are required to sign in at the Front office of each campus. Samaritan has very tight definitions of what constitutes being absent or late.

All absences are required to be explained by parents/caregivers via a note in the student's diary. Unexplained absences are followed up by phone from the class teacher or caregroup teacher to the parent/caregiver. Long term absences are followed up through various agencies including Families SA and through the Catholic

Education Office. Attendance issues for indigenous students are coordinated through our Indigenous Education Worker and the Catholic Education Office.

Some students in certain grades continue to have an attendance issue regardless of the support of the college or the outside agencies listed above. Attendance closely links to success both at school and post school.

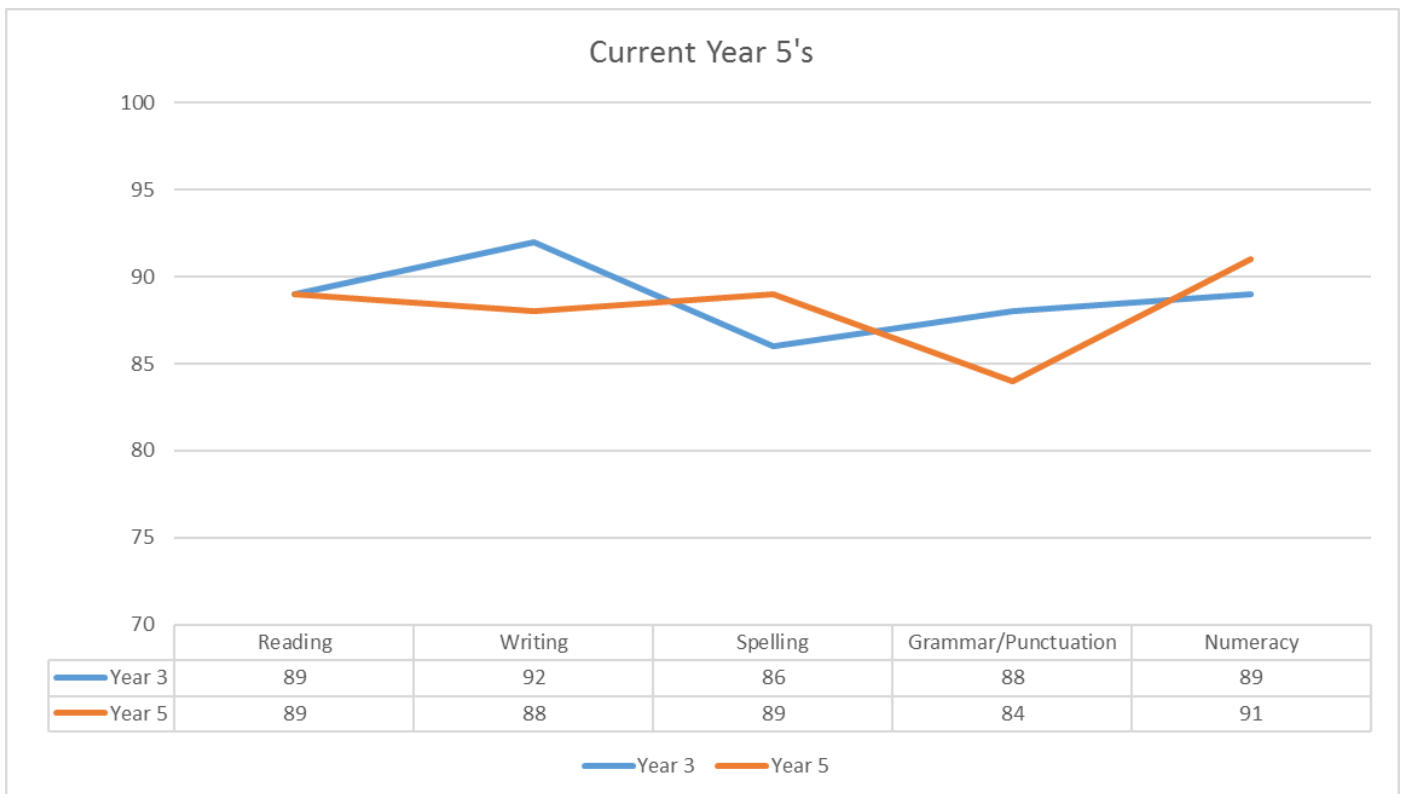
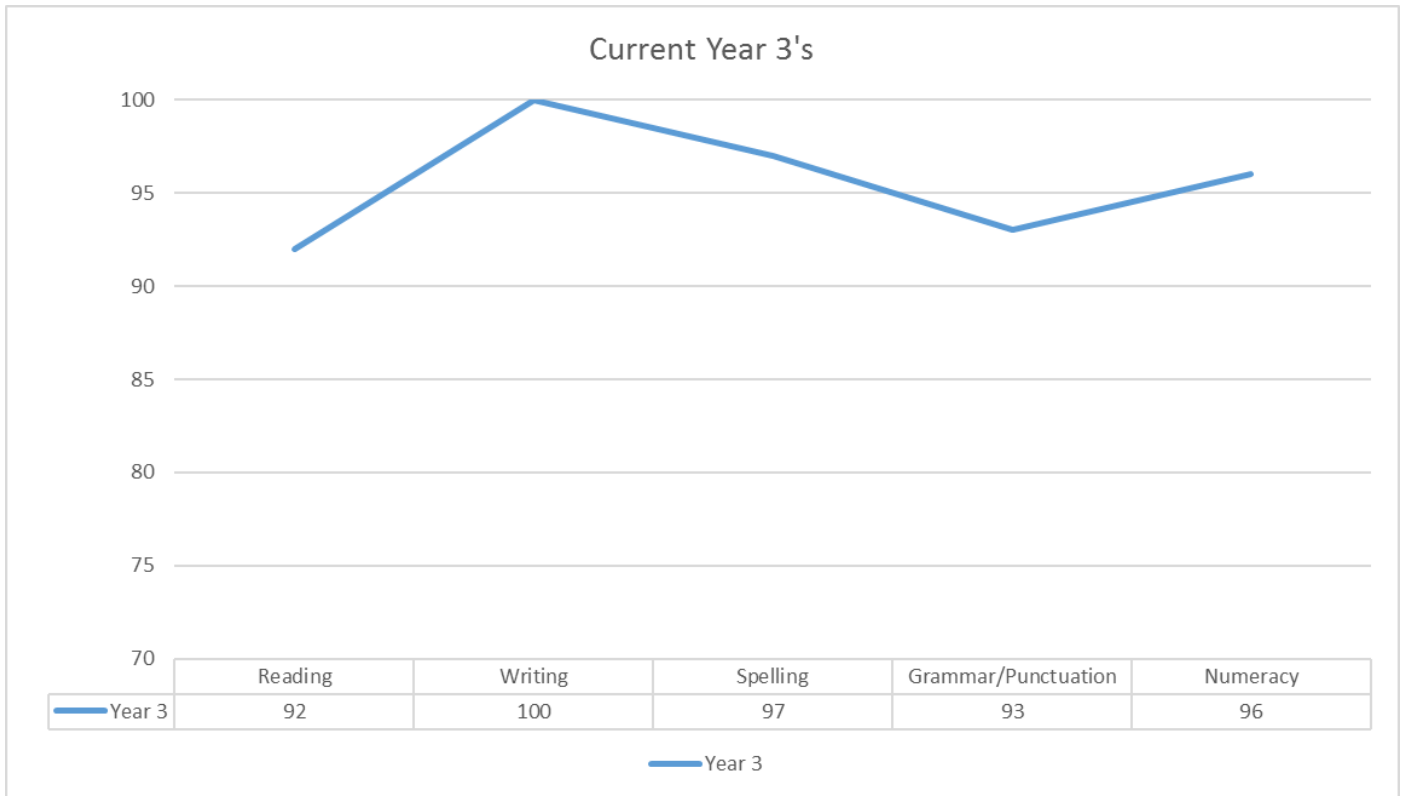
2016 NAPLAN results

The percentage of students who achieved the National Minimum Standard in 2012-16

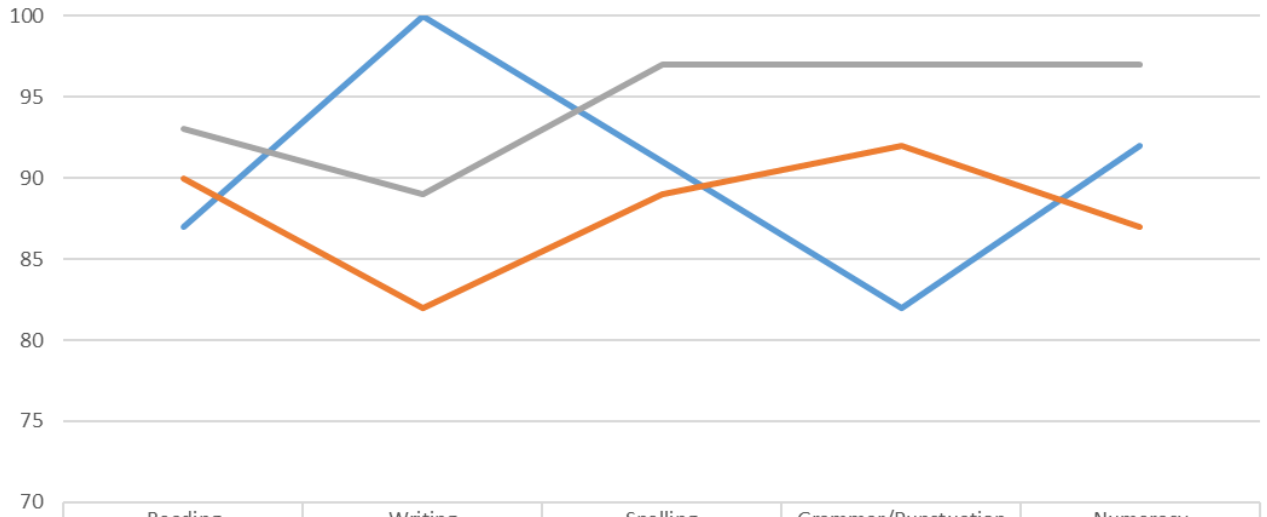
Samaritan College is resulted as a whole college and not individual campuses i.e. our Year 5 results include students from St Teresa's and Our Lady's Campuses together.

	% of Students who achieved the NMS (National Minimum Standard)				
	2012	2013	2014	2015	2016
Year 3					
Reading	87	89	95	89	92
Writing	100	92	89	89	100
Spelling	91	86	87	89	97
Grammar/Punctuation	82	88	93	88	93
Numeracy	92	89	95	92	96
Year 5					
Reading	90	100	90	89	87
Writing	84	92	82	88	87
Spelling	91	92	89	89	88
Grammar/Punctuation	93	94	92	84	87
Numeracy	93	90	87	91	90
Year 7					
Reading	90	96	97	93	93
Writing	94	93	95	92	89
Spelling	91	95	94	95	97
Grammar/Punctuation	97	88	85	93	97
Numeracy	95	96	97	98	97
Year 9					
Reading	84	98	93	94	93
Writing	56	88	86	82	84
Spelling	87	95	89	96	91
Grammar/Punctuation	88	94	90	93	85
Numeracy	93	95	96	100	100

The graphs below show the results of the current students in their past NAPLAN tests i.e. the 2016 year 7 graph shows their average results when the same students were in Year 5 and Year 3.



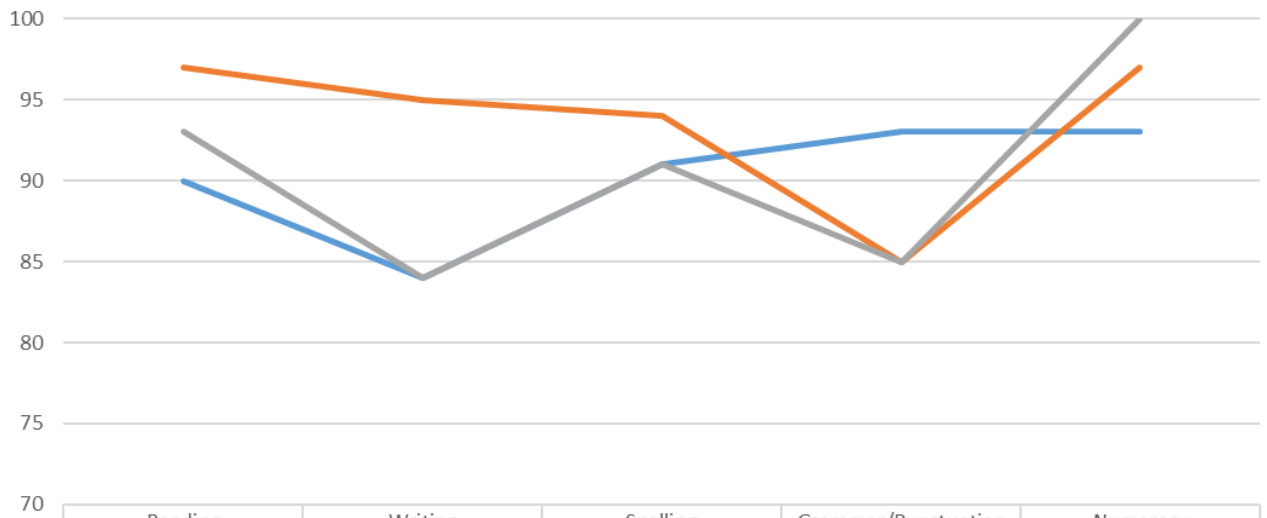
Current Year 7's



	Reading	Writing	Spelling	Grammar/Punctuation	Numeracy
Year 3	87	100	91	82	92
Year 5	90	82	89	92	87
Year 7	93	89	97	97	97

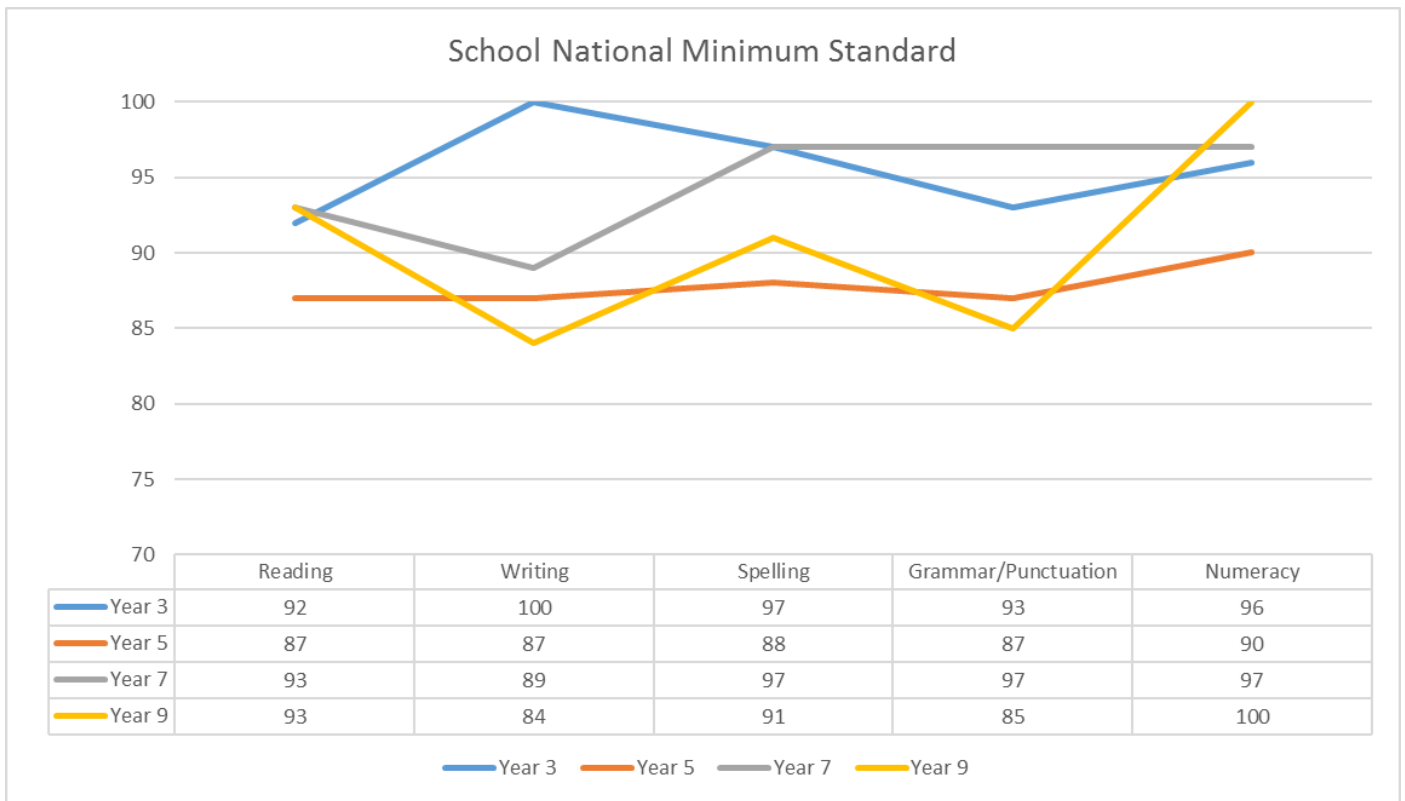
Year 3 Year 5 Year 7

Current Year 9's



	Reading	Writing	Spelling	Grammar/Punctuation	Numeracy
Year 5	90	84	91	93	93
Year 7	97	95	94	85	97
Year 9	93	84	91	85	100

Year 5 Year 7 Year 9



Senior secondary outcomes

Senior secondary outcomes

Number of 2016 Year 12s = 80

Number who achieved their SACE = 80 (100%)

Number of students with a TAFE selection score = 78 (98%)

Number of students with an ATAR = 76 (95%)

Post-school destinations

62 students applied for uni courses; 57 received an offer. Of these, 39 students received their first preference. Degrees in sciences (including medicine and allied health) were popular. TAFE offers are unknown.

Three students fully completed TAFE qualifications (Cert III) as part of their Year 12 studies. Of these students, two applied for uni courses and both received offers (for their first preferences).

Child Protection

'Child Protection' remains as a standard agenda item at Board Meetings and College Executive Leadership Meetings. College Leadership reports to the Board any training that has recently been undertaken in this area or initiatives introduced and provides data about the number of reports made to the Child Protection authorities. Personal information about these reports are not disclosed to the Board unless serious action has been needed. At College Leadership meetings, strategies and initiatives are discussed and planned around prevention and ensuring the correct follow up of relevant incidents are occurring.

Parent, teacher and student satisfaction

There are many opportunities for parents, staff and students to provide feedback to the college.

At times, the college requests feedback from parents regarding various activities or processes within the College. These include the college reports, parent teacher interviews, uniforms, camps and Year 7 transition process.

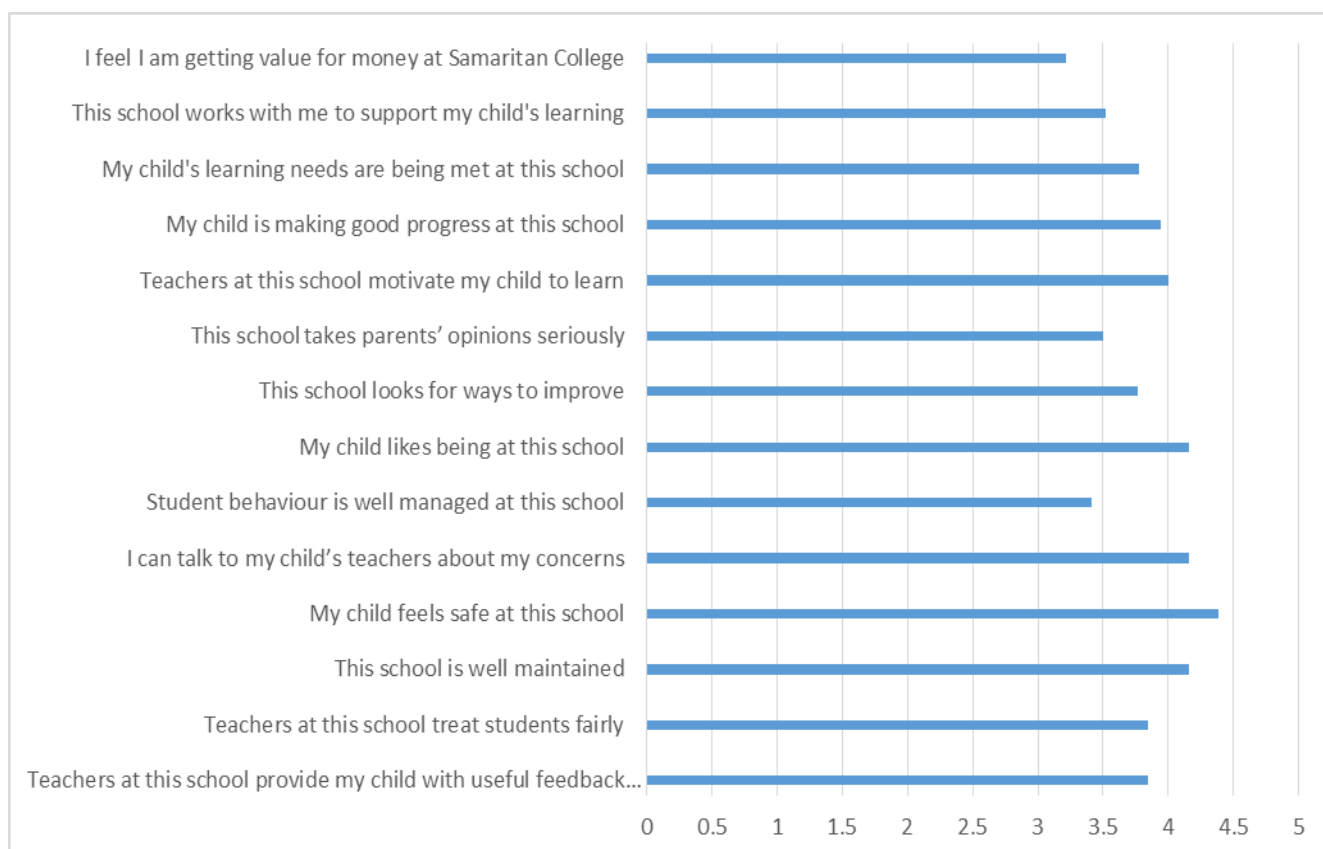
The College Board has avenues of communication for parents to voice their concerns and discussions. Leadership to meet with the Board Chairperson in order to discern parent related matters pertaining to the College Board jurisdiction. There are also a range of committees in the college that parents can join i.e. finance, uniform, policy etc

The use of our info@ email address enables parents to openly communicate to the college with important information.

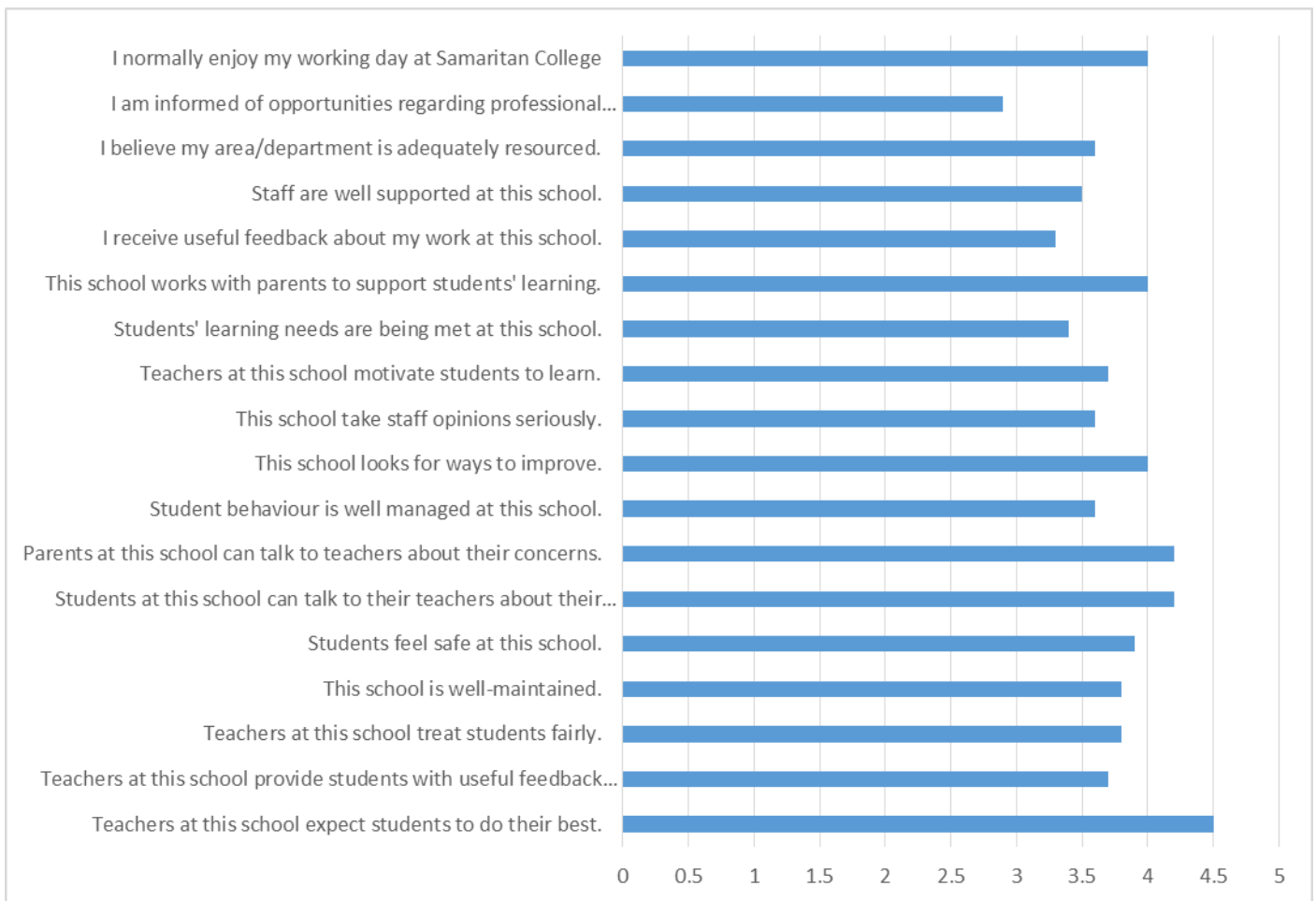
In recent years, the college has distributed online surveys to staff, students and parents. These have gradually become more popular as a feedback avenue. Below are the results from surveys undertaken at the end of 2016. These were widely distributed on our various online forums.

PARENTS: (33 replied. Half the replies were from families with students in Year 3 and below)

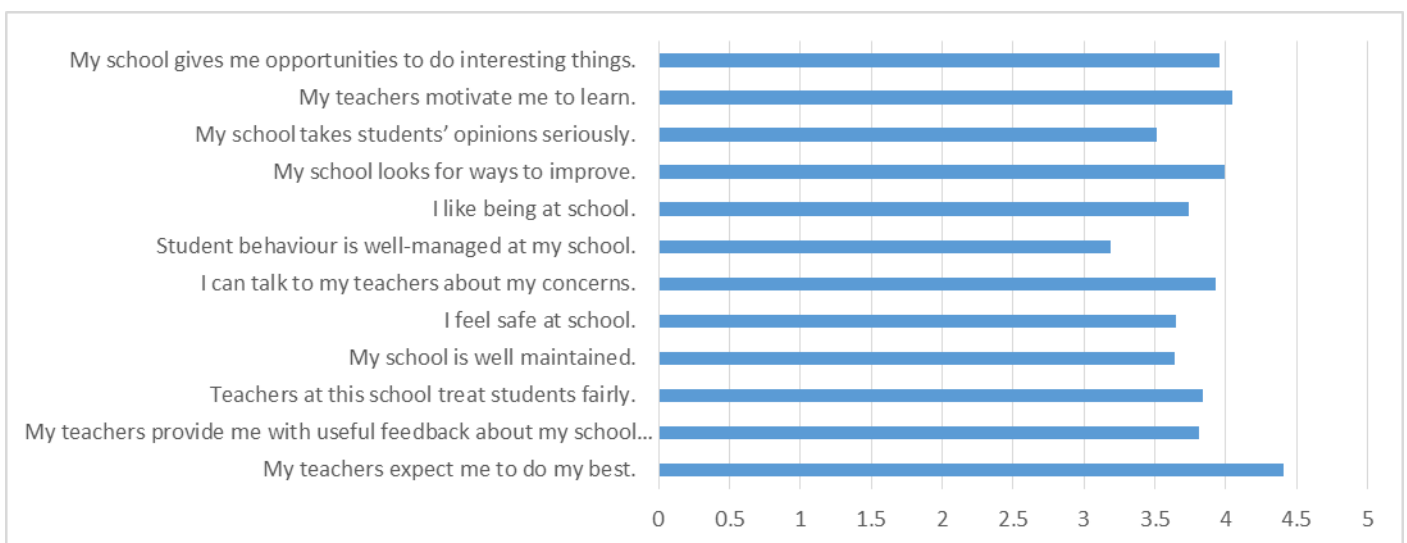
1: Strongly disagree 2. Disagree 3. Neither 4. Agree. 5. Strongly Agree



STAFF: (predominantly primary staff replied and only 9 overall i.e. 14%)

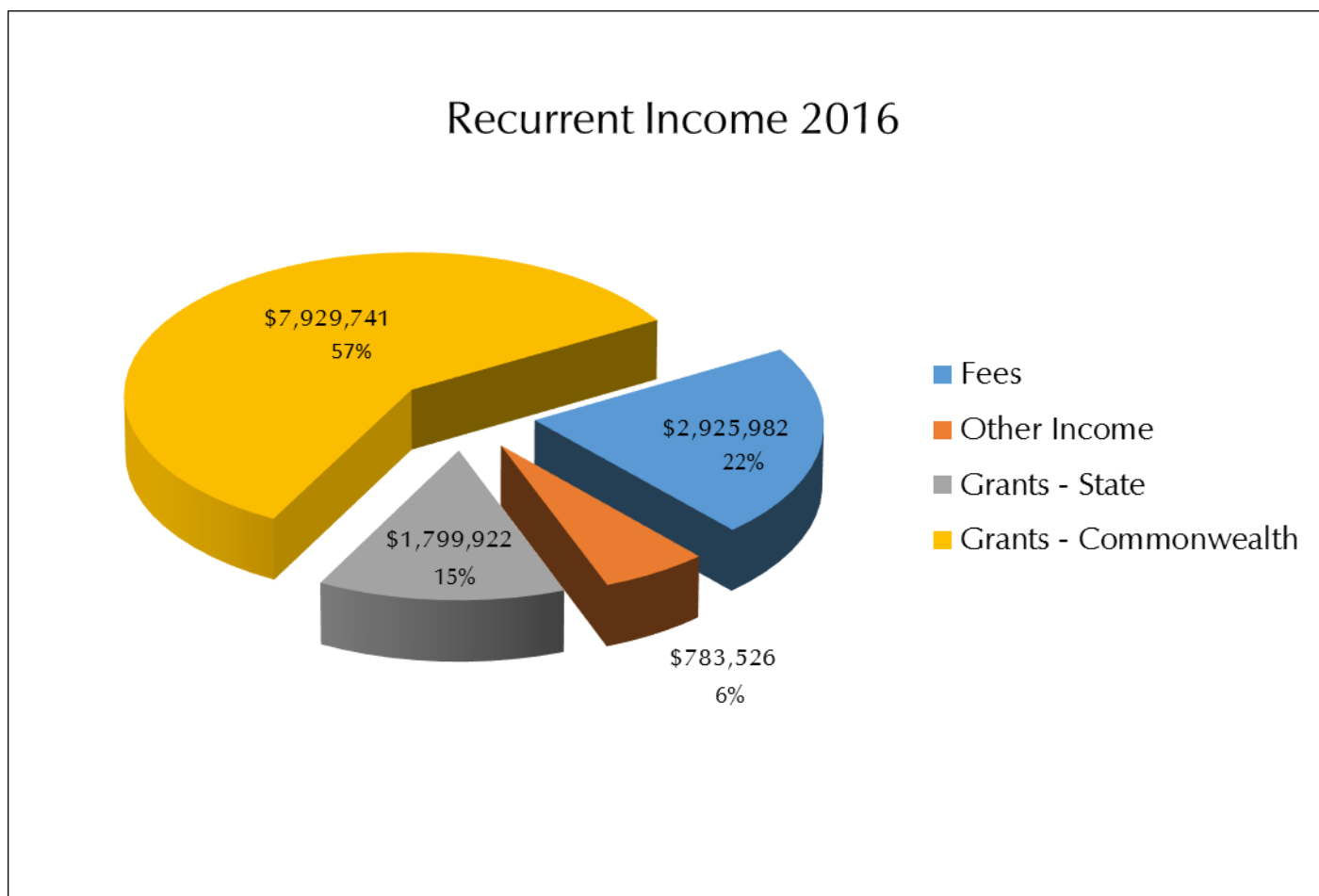


STUDENTS: (85 students replied, with most replies from the Year 3,4,5 i.e. 9.6%)



2016 Financial Information

Fees	\$	2,925,982	22%
Other Income	\$	783,526	6%
Grants - State	\$	1,799,922	13%
Grants - Commonwealth	\$	7,929,741	59%
	\$	<u>13,439,171</u>	



The college is continuing to strive towards meeting its set goals. In the past 12 months, the college has:

- Successfully initiated a Bring Your Own Device (laptops) to the secondary campus
- Successfully prepared for the move of the Year 7s to the secondary campus in 2017
- Significantly reduced its staffing profile to match the current student enrolments and thereby reducing costs
- Established structures that will absorb further enrolment fluctuation

- Installed refrigerated air conditioners to over 85% of the classrooms (in 2006, this was less than 10%).
- 90% of the classrooms across the whole college have their own interactive whiteboard and 100% of the college now has wifi access
- Established its own 'app' and established a strong social media presence via Facebook and the app.
- Moved the primary Inclusive Education Coordinator into the primary leadership team
- Applied for \$4.5m worth of grants for primary campus upgrades (in 2017 these were approved)
- Re-laid and repaired the STC basketball court and quadrangle area
- Removed asbestos from SJC
- Replaced shade sails at OLHCC
- Installed high quality cricket nets at SJC
- Re-laid and repaired carpark area at SJC
- Purchased Wilsdon St land outright i.e. not part of grant anymore
- Prepared to introduce House/Vertical caregroup system at SJC
- Maintained significant investment in training for staff in the areas of special needs, literacy and numeracy
- Established new links with local charities through SRC at SJC
- Increased number of staff beginning or continuing their study in the Graduate Certificate of Religious Education
- Coordinated, thanks to the P&F, a whole new range of events for families and students outside of college hours
- Improved our moderation techniques (ensuring student work is assessed fairly across staff and campuses)
- Established contemporary methods of staff undertaking personal professional development
- Re-modelled our fee structure to reduce the 'jump' from primary school to secondary school
- Re-introduction of a Staff Retreat
- Staff PD on meditation and prayer
- Increased the number of families committing to direct debit as a method of fee payment
- Continued to utilise radio as a method of promoting the college and its activities
- Worked with OSHC to reduce its costs and to promote it as a valid out of schools hours' option for families.
- Refurbished the 4 Good Samaritan classrooms at SJC (significant upgrades)